



# Bergvesenet

Postboks 3021, 7002 Trondheim

## Rapportarkivet

Bergvesenet rapport nr <b>BV 1954</b>	Intern Journal nr	Internt arkiv nr	Rapport lokalisering Trondheim	Gradering
Kommer fra ..arkiv	Ekstern rapport nr LV 5	Oversendt fra	Fortrolig pga	Fortrolig fra dato:
Tittel The geology of the Druguvatn area				
Forfatter Bollingmo, Åse		Dato 30.12 1981	Bedrift Orkla Industrier A/S	
Kommune Meldal	Fylke Sør-Trøndelag	Bergdistrikt Trondheimske	1: 50 000 kartblad 15213	1: 250 000 kartblad
Fagområde Geologi	Dokument type	Forekomster Druguvatn-området, Løkken		
Råstofftype Malm/metall	Emneord			
Sammendrag				

GULF - ORKLA

LØKKEN VENTURE

REPORT NO.: L.V.5

DATE: 30.12.1981

TITLE: The geology of the Druguvatn area

# ORKLA INDUSTRIER A.S.

## MINING SECTION, EXPLORATION

Report no: L.V.5	Date: 30.12.1981
Title:  The geology of the Druguvatn area, preliminary report	
Prepared by: Åse Bollingmo	Areas name: Druguvatn area
Map no., name: 15213 Løkken	Coordinates (UTM): NW-corner: 28015
Field work period(s): 7.9 - 14.9.1981	Pages: Map enclosures: 4
Summary (purpose, execution, results):  <p>A system of turam anomalies was to be investigated. VLF-measurements gave several anomalies. The following geological mapping did not give any answers to what could be the anomalies' reasons. Some of the anomalies should be further examined.</p> <p>During the geological mapping some interesting mineralized zones were discovered. These should be more detailed mapped.</p>	
Key words: Geological mapping, VLF	
Project initiated (date): 7.9.1981	Report finished (date): 30.12.1981

C O N T E N T:

1. Introduction
2. Geology
3. Discussion of VLF measurements
4. Conclusion

- Enclosures:
1. Map 1: General view of areas west of Orkla river, 1:20.000
  2. Turam anomalies and VLF-net
  3. VLF-curves
  4. Geological map, 1:5000

## 1. Introduction

The Druguvatn area covers about  $2 \times 1.5 \text{ km}^2$  south of Litlvatnet and between the road from Storås to Hoston and Orkla river (Encl. 1).

A system of turam anomalies was to be investigated (Encl. 2).

In the northern part of the area some VLF-measurements were done (Encl. 3).

South of Langdalsvann a preliminary geological mapping was done (Encl. 4). Samples were collected, and thin - and polished sections were prepared. These will be examined and described in a later report in case they change the conclusion.

## 2. Geology

In the Druguvatn area you find greenstones of the Støren group. Most often they occur as pillow lava. This is variolitic, except for some localities around the eastern end of Dammyra. Here vesicular pillows are more common.

The greenstones are cut by several dolerite dykes. As a general thesedip slightly to the north and strike E-W. Often the dykes contain disseminated pyrrhotite, more seldom pyrite.

Two localities with jasper are observed.

The geological mapping gave no sufficient explanation for the turam anomalies.

## 3. Geophysics

VLF-measurements were done in the northern part of the area.

Profile direction:  $3^g$   
 Profile intervals: 100 m  
 Measurements intervals: 25 metres  
 VLF-station: NAA  
 Measurement are:  $1400 \text{ m}^2$

The following table gives a general view of the VLF-conductors.

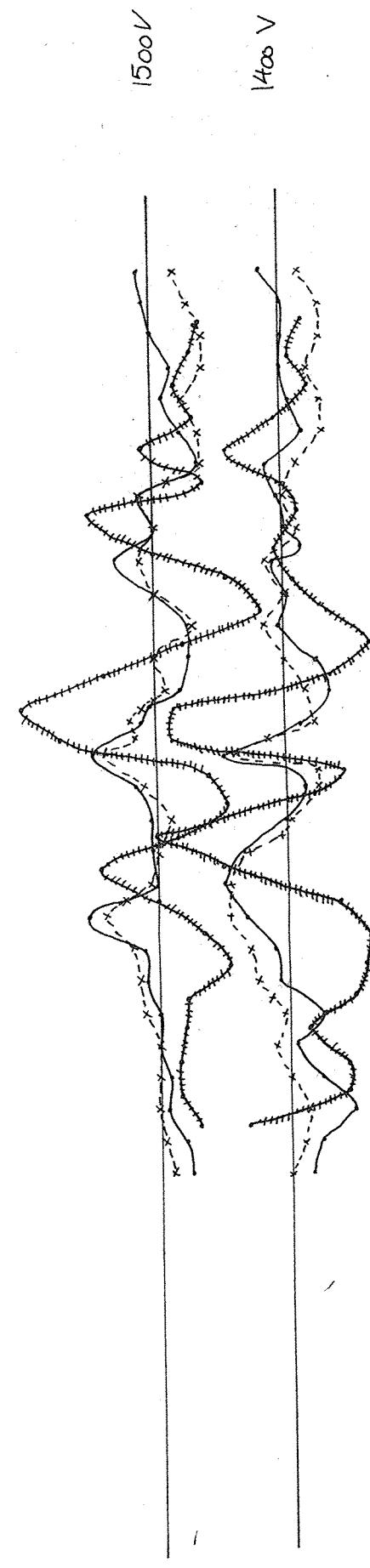
Profile	N-S coordinate	Dip	Depth	Remarks
500 W	250-300 N	slight E	narrow	bad cond., corr. with turam anom.
	225	slight E	rel. narrow	" " " " " "
	450-500	flat	rel. deep	bad cond.
	600-650	slight E	narrow	good cond., should be further exam.
700 W	75-100	flat	rel. narrow	bad cond.
	250	rel. steep	narrow	50 metres W of turam anom.
	575	flat	narrow	corr. with turam anom.
1400 W	75	flat	narrow	bad cond.
	150	rel. steep	narrow	corr. with turam anom.
	200-250	steep	narrow	
	300	very steep	narrow	corr. with turam anom.
	600	flat	rel. narrow	" " " "
				" " " "
1500 W	150	flat	narrow	
	200	rel. steep	narrow	50 m W of turam anom.
	300	steep		25 m E of turam anom.
	450-500	rel. steep	narrow	corr. with two turam anom.

#### 4. Conclusion

The VLF-measurements gave several anomalies. These generally have a good correlation with the old turam anomalies.

As the geological mapping gave no explanation to the anomalies, further investigations are recommended. It is necessary with a more detailed geological mapping, and geophysical methods will be discussed.

0 N 100 N 200 N 300 N 400 N 500 N 600 N 700 N



1300 V

1200 V

1100 V

1000 V

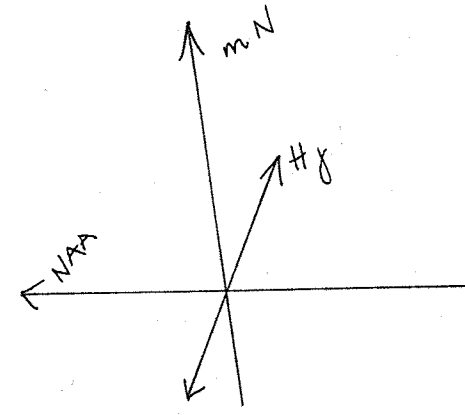
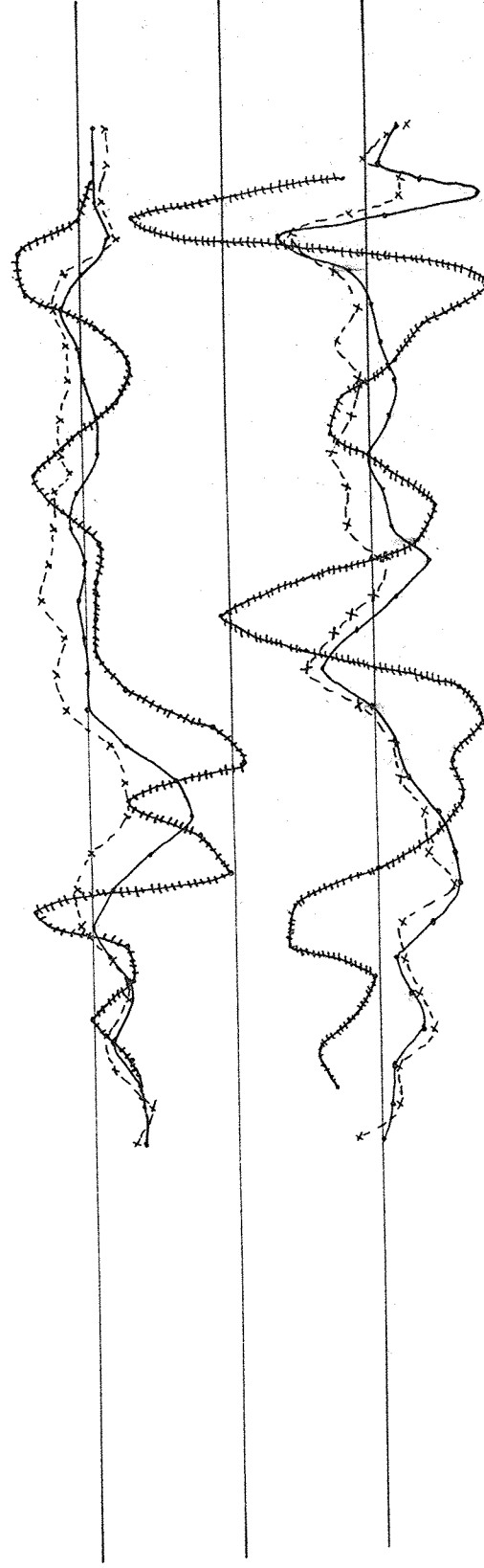
900 V

800 V

700 V

600 V

500 V



DRUGGUVATNET  
VLF - anomaly map (instr. Paulsen)  
— Dip angle, x-x-x imaginary component  
and ———— Fraser curves. Station N44

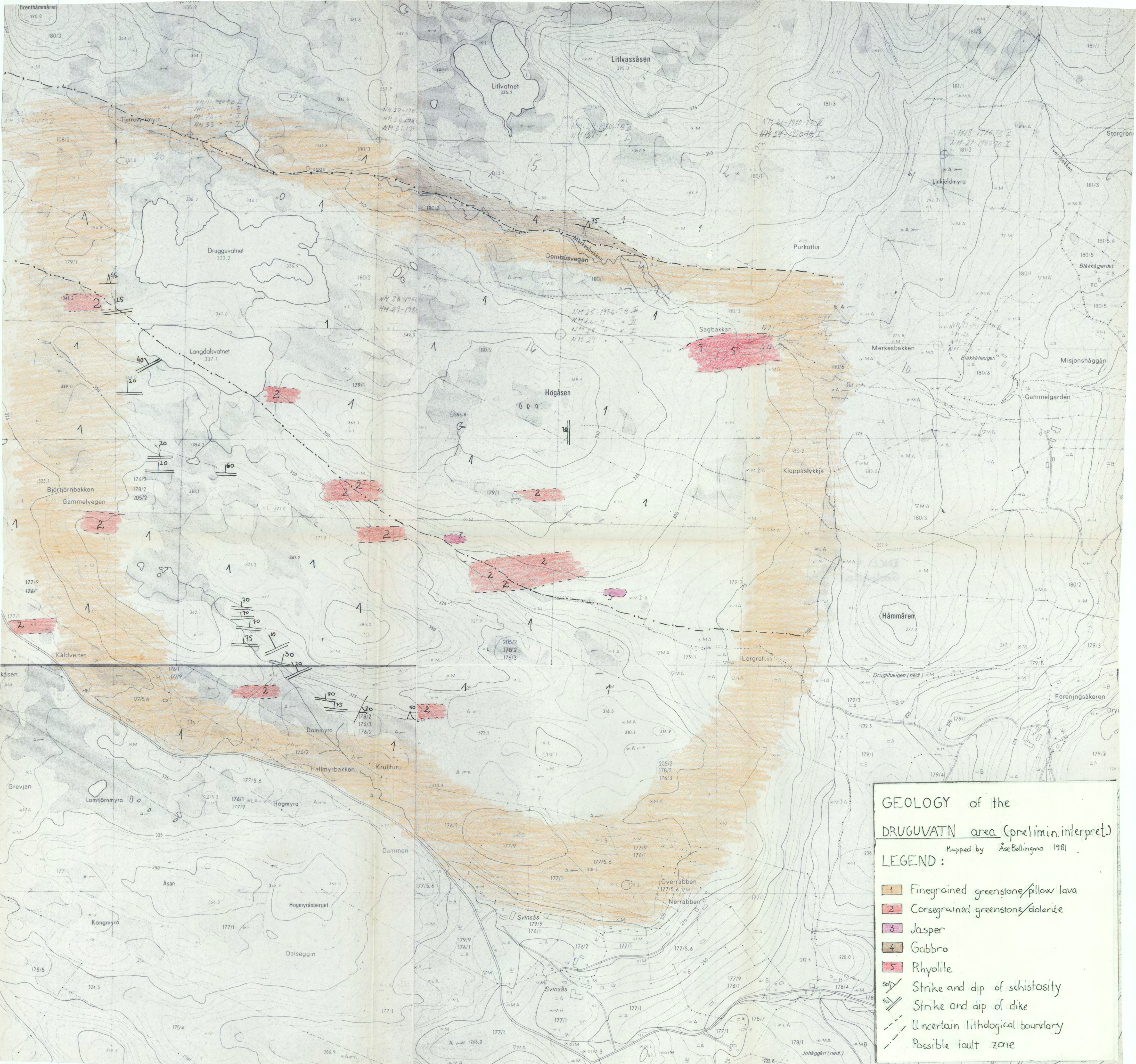
Scale:  
1:5000

Draw:  
Trac.

KL  
AM  
car 1000

No: Gf I D4  
Orkla Industrier A.S.  
7832 Løkken Verk  
Gulf - Orkla Venture





GEOLOGY of the  
DRUGUVATN area (prelimin. interpret.)

Mapped by Åse Bollingmo 1981

LEGEND:

- 1 Finegrained greenstone/pillow lava
- 2 Coarsegrained greenstone/dolerite
- 3 Jasper
- 4 Gabbro
- 5 Rhyolite
- 60° Strike and dip of schistosity
- 40° Strike and dip of dike
- Uncertain lithological boundary
- - - Possible fault zone



